

## Product News / English

The difference in performance level is like black magic!

**BLACK•RUSH**



## **BLACK•RUSH**

### **BLACK•RUSH** Grade, New Generation Inserts For Gray Cast Iron And Ductile Cast Iron Machining

With its innovative and creative technology, TaeguTec has launched a new line of CVD coated inserts grades: **BLACK•RUSH** TT7005 and TT7015 for gray and ductile cast iron machining.

The new and enhanced technology of the alumina CVD coating process provides much longer tool life and higher productivity for cast iron machining.

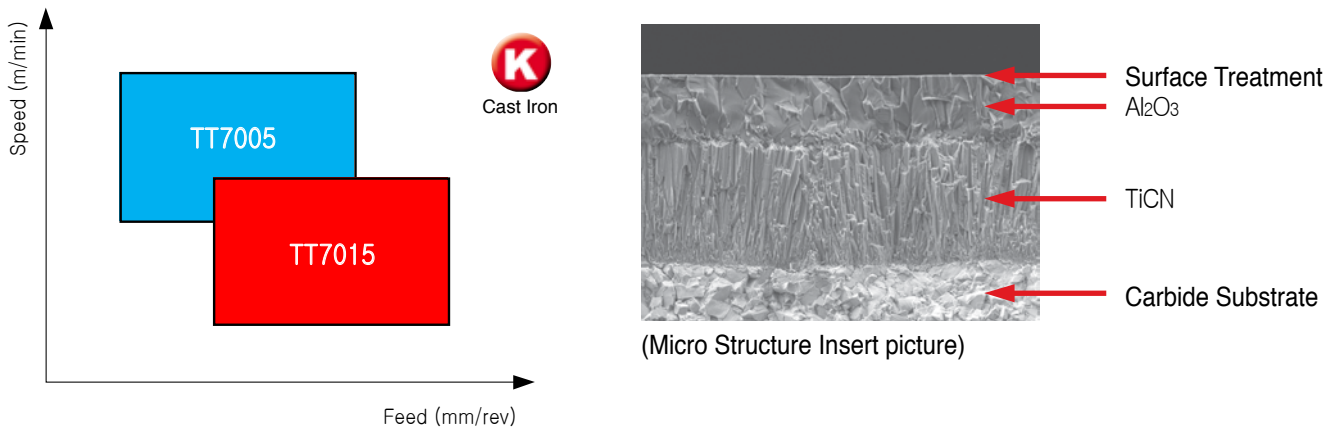
The new and improved coating process minimises flank and crater wear for high speed machining of gray cast iron. Following the alumina coating process, a further surface treatment is applied to ensure good surface finish when machining of cast iron automotive & general components. The smooth surface finish of the **BLACK•RUSH** insert's cutting friction reduces cutting force.

The **BLACK•RUSH** grades ensure long tool life with homogeneous quality so end users machining components have stability when machining on special purpose machines or mass production CNC machines in the automotive industry.

The TT7005's physical properties promote remarkable wear resistance making it the suitable choice for gray cast iron or ductile cast iron high speed machining for reduced cycle time and increased productivity. Whilst TT7015 grade's superior wear and chipping resistance, delivers excellent performance in general machining of gray and ductile cast iron in extreme interrupted machining and non-homogeneous workpiece surface conditions.

## Product News / English

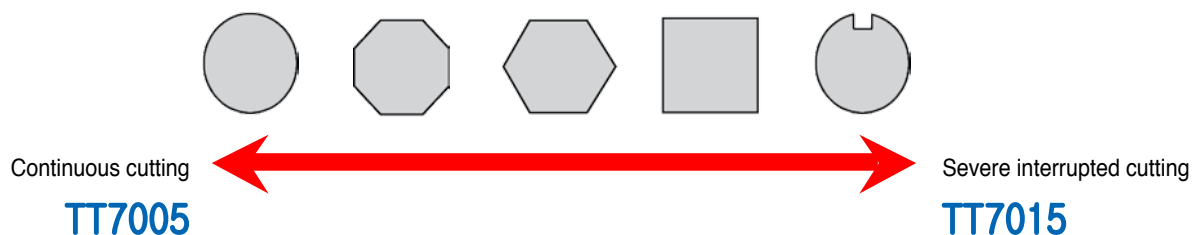
### BLACK-RUSH Application Range



### BLACK-RUSH Application

Grade	ISO Range	Application
TT7005	K05-K20	<p>For high speed machining of gray and ductile cast iron</p> <ul style="list-style-type: none"> <li>- Excellent wear resistant coated grade assures optimum performance in high speed continuous machining of cast iron</li> </ul>
TT7015	K10-K30	<p>For general machining of gray and ductile cast iron</p> <ul style="list-style-type: none"> <li>- Secure and stable tool life credit to wear resistance and higher toughness during interrupted cutting</li> <li>- Improved chipping resistance and higher toughness during interrupted cutting credit to coating layer's strong binding force</li> <li>- For continuous and interrupted machining of gray and ductile cast iron</li> </ul>

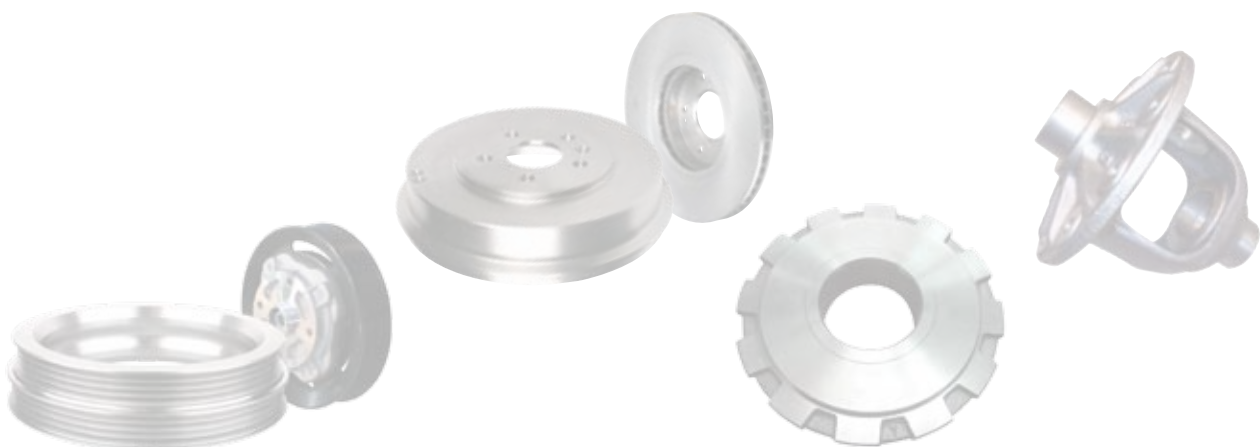
### Grade Choice By Shape Of Workpiece



## Product News / English

### TT7005 Grade Test Results

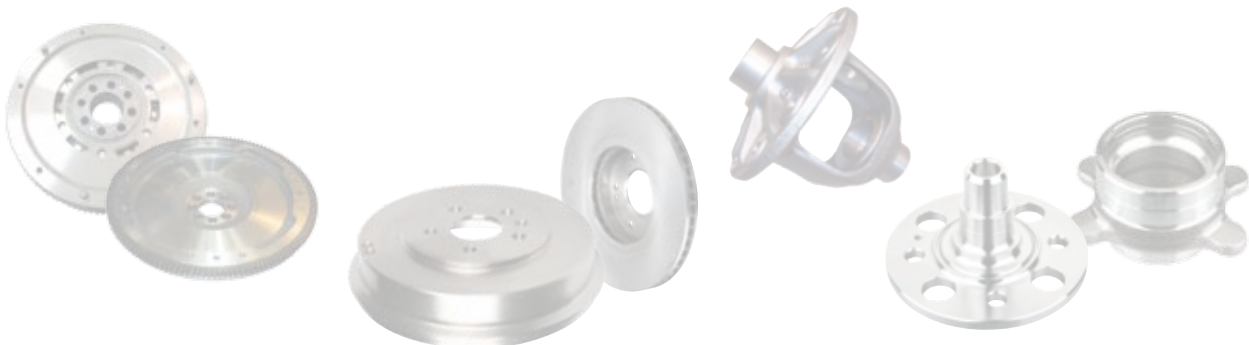
Material	Component	V(m/min)	f(mm/rev)	Depth Of Cut (mm)	Operation	Coolant	Insert Designation	Tool Life (pcs/corner)
Gray Cast Iron	Piston Ring	700	0.3	2.5	Ext & Facing	Yes	Competitor	400
							WNMG 080404 MT TT7005	500 <b>25%↑</b>
	Pulley	490	0.25	0.15	Int Turning & Finishing	No	Competitor	50-60
							DNMG 150608 TT7005	73 <b>22%↑</b>
	Brake Disc	750	0.4	1	Ext Turning & Finishing	Yes	Competitor	23
							SNMA 120408 TT7005	52 <b>126%↑</b>
		750	0.4	1	Facing & Interrupted Cut	Yes	Competitor	9
							WNMA 080408 TT7005	15 <b>67%↑</b>
		750	0.4	1	Facing & Interrupted Cut	Yes	Competitor	22
							WNMA 080408 TT7005	51 <b>131%↑</b>
	750	0.4	1	Ext Turning	Yes	Competitor	50	
						SNMA 120408 TT7005	67 <b>34%↑</b>	
	700	0.45	1.5-2.0	Facing	Yes	Competitor	22	
						CNMG 120412 RT TT7005	25 <b>14%↑</b>	
Pressure Plate	450	0.3	1.5	Facing & Interrupted Cut	No	Competitor	120	
						SNMG 120408 RT TT7005	140 <b>170%↑</b>	
450	0.3	2.5-3.0	Int Turning & Continuous Cut	No	Competitor	120		
					SNMG 120408 RT TT7005	140 <b>17%↑</b>		
Machine Component	232	0.15	2	Facing & Interrupted Cut	Yes	Competitor	520	
						CNMG 120408 TT7005	550 <b>5%↑</b>	
Ductile Cast Iron	Pump	170	0.17	0.2-0.25	Ext & Finishing	Yes	Competitor	40
							CNMA 120408 TT7005	40 <b>Equal</b>
	Collar	200	0.2	2.5	Int & Continuous	Yes	Competitor	20
CNMA 120408 TT7005							24 <b>20%↑</b>	
Differential Case	370	0.35	2	Ext turning	Yes	Competitor	125	
						SNMA 120408 TT7015	145 <b>16%↑</b>	



## Product News / English

### TT7015 Grade Test Results

Material	Component	V(m/min)	f(mm/rev)	Depth Of Cut (mm)	Operation	Coolant	Insert Designation	Tool Life (pcs/corner)
Gray Cast iron	Brake Disc	313	0.3	2.5-3.0	Int Turning & Facing	Yes	Competitor	19
							CNMG 120412 RT TT7015	26 <b>37%↑</b>
		530	0.35	2.5-3.0	Ext Turning & Facing	Yes	Competitor	35
							CNMA 120412 TT7015	45 <b>29%↑</b>
	395-108	0.3-0.35	2	Ext Turning & Facing	No	Competitor	10	
						WNMG 080412 RT TT7015	15 <b>50%↑</b>	
	400	0.2-0.32	1.5	Ext Turning & Facing	Yes	Competitor	40	
						CNMG 120412 TT7015	57 <b>42%↑</b>	
	Drum	400	0.25-0.30	1.5-1.8	Ext Turning & Facing	Yes	Competitor	30
							CNMG 120412 TT7015	40 <b>33%↑</b>
		395-330	0.25-0.30	2	Int Turning & Facing	Yes	Competitor	25
	CNMG 120408 TT7015						36 <b>44%↑</b>	
	376-157	0.3	1.5	Int Turning & Facing	Yes	Competitor	40	
						CNMG 120408 TT7015	80 <b>100%↑</b>	
	Fly Wheel	350	0.25	3	Ext Turning & Roughing	Yes	Competitor	6
							CNMA 120408 TT7015	8 <b>33%↑</b>
Brake Drum	260	0.35	2	Ext Turning & Roughing	Yes	Competitor	6	
						CNMG 120408 TT7015	9 <b>50%↑</b>	
Bottom Housing	415	0.5	2	Ext Turning & Roughing	Yes	Competitor	25	
						CNMA 120412 TT7015	36 <b>44%↑</b>	
Ductile Cast iron	Differential Case	336	0.15	1	Int Turning	Yes	Competitor	60
							TNMG 160408 TT7015	80 <b>33%↑</b>
	Hub	350	0.25	0.5	Int turning & Finishing	Yes	Competitor	80
							DNMG 150608 TT7015	120 <b>50%↑</b>
	350	0.3	3	Ext Turning	Yes	Competitor	25	
						CNMA 120412 TT7015	33 <b>32%↑</b>	
	Rear Hub	180	0.3-0.4	2.0-3.0	Ext Turning & Roughing	Yes	Competitor	22
							CNMA 120412 TT7015	30 <b>17%↑</b>
6-7	10	13%↑	10	13%↑	Yes	Competitor	6-7	
						CNMG 120412 MT TT7015	10 <b>13%↑</b>	



## Product News / English

### Item List

Description	Grade	
	TT7005	TT7015
CCMT 060204 MT	•	•
CCMT 060208 MT	•	•
CCMT 09T304 FG	•	
CCMT 09T304 MT	•	•
CCMT 09T308 FG	•	
CCMT 09T308 MT	•	•
CCMT 09T308 WT	•	
CCMT 120404 MT	•	•
CCMT 120408 FG	•	
CCMT 120408 MT	•	•
CCMT 120412 MT	•	
CNMA 120404	•	•
CNMA 120408	•	•
CNMA 120408 WT	•	
CNMA 120412	•	•
CNMA 120416	•	•
CNMA 160612	•	•
CNMA 160616	•	•
CNMA 190608	•	•
CNMA 190612	•	•
CNMA 190616	•	•
CNMG 090308	•	
CNMG 090308 MT	•	
CNMG 120404	•	•
CNMG 120404 MT	•	•
CNMG 120408	•	•
CNMG 120408 MC		•
CNMG 120408 MT	•	•
CNMG 120408 RT	•	•
CNMG 120408 WT	•	•
CNMG 120412	•	•
CNMG 120412 MT	•	•
CNMG 120412 RT	•	•
CNMG 120412 WT	•	
CNMG 120416 RT		•
CNMG 160608 MT	•	
CNMG 160612 MT	•	•
CNMG 160612 RT	•	•
CNMG 160616 RT	•	•
CNMG 190608	•	•
CNMG 190608 MT	•	

Description	Grade	
	TT7005	TT7015
CNMG 190608 RT	•	
CNMG 190612	•	•
CNMG 190612 MT	•	
CNMG 190612 RT	•	•
CNMG 190616 RT	•	•
CNMM 120408 RH		•
DCMT 11T304 MT	•	•
DCMT 11T308 MT	•	•
DCMT 11T312 MT	•	•
DNMA 150408	•	•
DNMA 150412	•	•
DNMA 150608	•	•
DNMA 150612	•	•
DNMG 110408 MT	•	•
DNMG 110412 MT	•	
DNMG 150404	•	•
DNMG 150404 MT		•
DNMG 150408	•	•
DNMG 150408 MT	•	•
DNMG 150408 RT	•	•
DNMG 150408 WS		•
DNMG 150412	•	
DNMG 150412 RT		•
DNMG 150604	•	•
DNMG 150604 MT	•	•
DNMG 150608	•	•
DNMG 150608 MT	•	•
DNMG 150608 RT	•	•
DNMG 150612	•	•
DNMG 150612 MT	•	•
DNMG 150612 RT	•	•
HNMG 050408 GU	•	•
HNMG 100612 GU	•	•
KNUX 160405 R11	•	
KNUX 160410 R11		•
RCMT 10T300 MT	•	
RCMT 120400 MT	•	•
RCMT 160600 MT		•
RCMX 100300	•	•
RCMX 120400	•	•
RCMX 160600	•	•
RCMX 200600	•	•

Description	Grade	
	TT7005	TT7015
RCMX 250700	•	•
RCMX 320900	•	
SCMT 09T304 MT	•	•
SCMT 09T308 MT	•	•
SCMT 120404 MT	•	
SCMT 120408 MT	•	•
SCMT 120412 MT	•	•
SNMA 120408	•	•
SNMA 120412	•	•
SNMA 120416	•	•
SNMA 150612	•	
SNMA 150616		•
SNMA 190612	•	•
SNMA 190616		•
SNMA 250724		•
SNMA 250924		•
SNMG 120404	•	•
SNMG 120408	•	•
SNMG 120408 MT	•	•
SNMG 120408 RT	•	•
SNMG 120412	•	•
SNMG 120412 MT	•	
SNMG 120412 RT	•	•
SNMG 190608	•	•
SNMG 190612	•	•
SNMG 190612 RT	•	
TCMT 090204 MT	•	•
TCMT 090208 MT	•	•
TCMT 110204 MT	•	•
TCMT 110208 MT	•	•
TCMT 16T304 MT	•	•
TCMT 16T308 MT	•	•
TCMT 16T312 MT	•	
TNMA 160404	•	•
TNMA 160408	•	•
TNMA 160412	•	•
TNMA 160416	•	•
TNMA 220408	•	•
TNMA 220412	•	•
TNMA 220416	•	•
TNMG 160404	•	•
TNMG 160404 MT	•	•

## Product News / English

### Item List

Description	Grade	
	TT7005	TT7015
TNMG 160408	•	•
TNMG 160408 MT	•	•
TNMG 160408 RT	•	•
TNMG 160412 MT	•	
TNMG 160412 RT	•	•
TNMG 220404	•	
TNMG 220408	•	•
TNMG 220408 MT	•	
TNMG 220408 RT		•
TNMG 220412	•	
TNMG 220412 RT	•	•
TNMG 220416		•
TPMR 090208		•
TPMR 110304	•	•
TPMR 110308		•
TPMR 160304	•	•
TPMR 160308	•	•
TPMR 220408	•	
TPMT 110304 FG	•	
VBMT 160404 MT	•	•
VBMT 160408 MT	•	•
VBMT 160412 MT	•	
VNMG 130404 MT	•	•
VNMG 130408 MT	•	

Description	Grade	
	TT7005	TT7015
VNMG 160404	•	•
VNMG 160408	•	•
VNMG 160408 MT	•	•
VNMG 160412	•	•
WNMA 060408	•	•
WNMA 060412	•	
WNMA 080408	•	•
WNMA 080412	•	•
WNMA 080416	•	•
WNMG 060404 MT	•	•
WNMG 060408 MT	•	
WNMG 060408 WT	•	
WNMG 060412 WT		•
WNMG 060412 MT	•	
WNMG 080404	•	•
WNMG 080404 MT	•	•
WNMG 080408	•	•
WNMG 080408 MT	•	•
WNMG 080408 RT	•	•
WNMG 080408 WT	•	•
WNMG 080412	•	•
WNMG 080412 MT	•	•
WNMG 080412 RT	•	•
WNMG 080412 WT	•	•
WNMG 080416 RT	•	

• Marked : Standard item

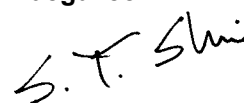
### Availability

In stock

### Price

Available in the GAL system

Sincerely,  
TaeguTec



**Shin, Su Yong**  
Turning & T-Clamp Product Manager